

**53rd ANNUAL DIAGNOSTIC SLIDE SESSION 2012.**

CASE 2012-8

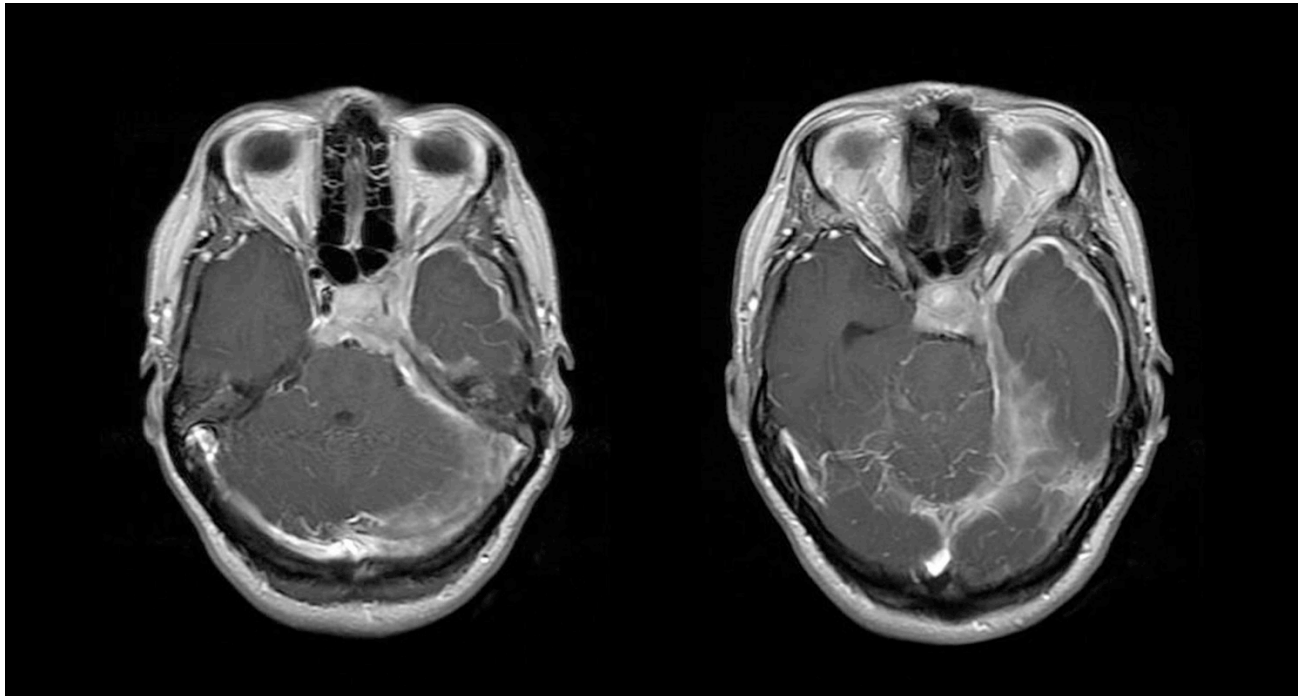
**Submitted by:** Michelle Madden Felicella<sup>1</sup>, Arie Perry<sup>1</sup>, and Juan Bilbao<sup>2</sup>

<sup>1</sup>UCSF Department of Pathology  
505 Parnassus Ave, M551, Box 0102  
San Francisco, CA 94143

<sup>2</sup>Sunnybrook Health Sciences Centre Pathology Dept  
2075 Bayview Ave  
Toronto, ON M4N3M5

**Clinical History:**

The patient is a 42-year-old woman who presented with left transverse sinus occlusion. She was treated with warfarin and followed by neurology. MRI showed prominent dural thickening and nodularity involving the majority of both cerebral hemispheres including the falx and tentorium. Repeat MRI a few months later showed worsened dural thickening. She was referred to neurosurgery and a biopsy was performed in the region of the left temporal lobe.



**Material submitted:**

1. Brain MRI (digital image)
2. Virtual - H&E stained section of meningeal biopsy

**Points for discussion:**

1. Differential Diagnosis
2. Ancillary studies
3. Diagnosis and diagnostic criteria