

50th ANNUAL DIAGNOSTIC SLIDE SESSION 2009.

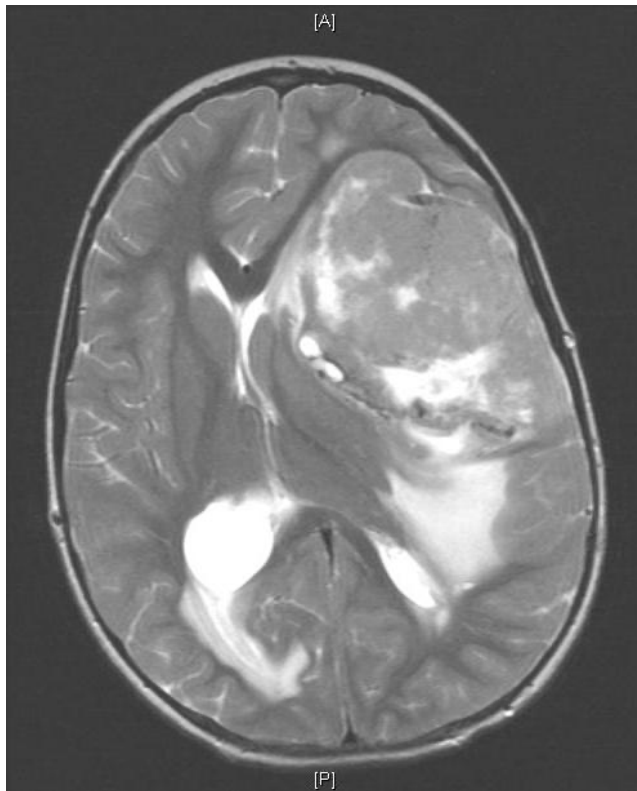
CASE 2009-2

Submitted by: Aaron S Wagner, M.D., Gary S Pearl, M.D., Ph.D. Orlando Regional Medical Center, 1414 Kuhl AVE MP44, Orlando, FL 32806

Clinical History: This 5-year-old girl presented with a 4-month history of primarily morning headaches and vomiting. In addition, she had a 1-month history of right facial droop and left gaze preference. MRI was performed and subsequently a partial resection was performed. After embolization a second craniotomy achieved gross total resection of the mass including a 1cm area that was thought to be the attachment of the mass to the dura.

Material submitted: H & E stained and unstained section of mass.

Representative preoperative MRI image:



Points for discussion:

1. Diagnosis
2. Pathogenesis